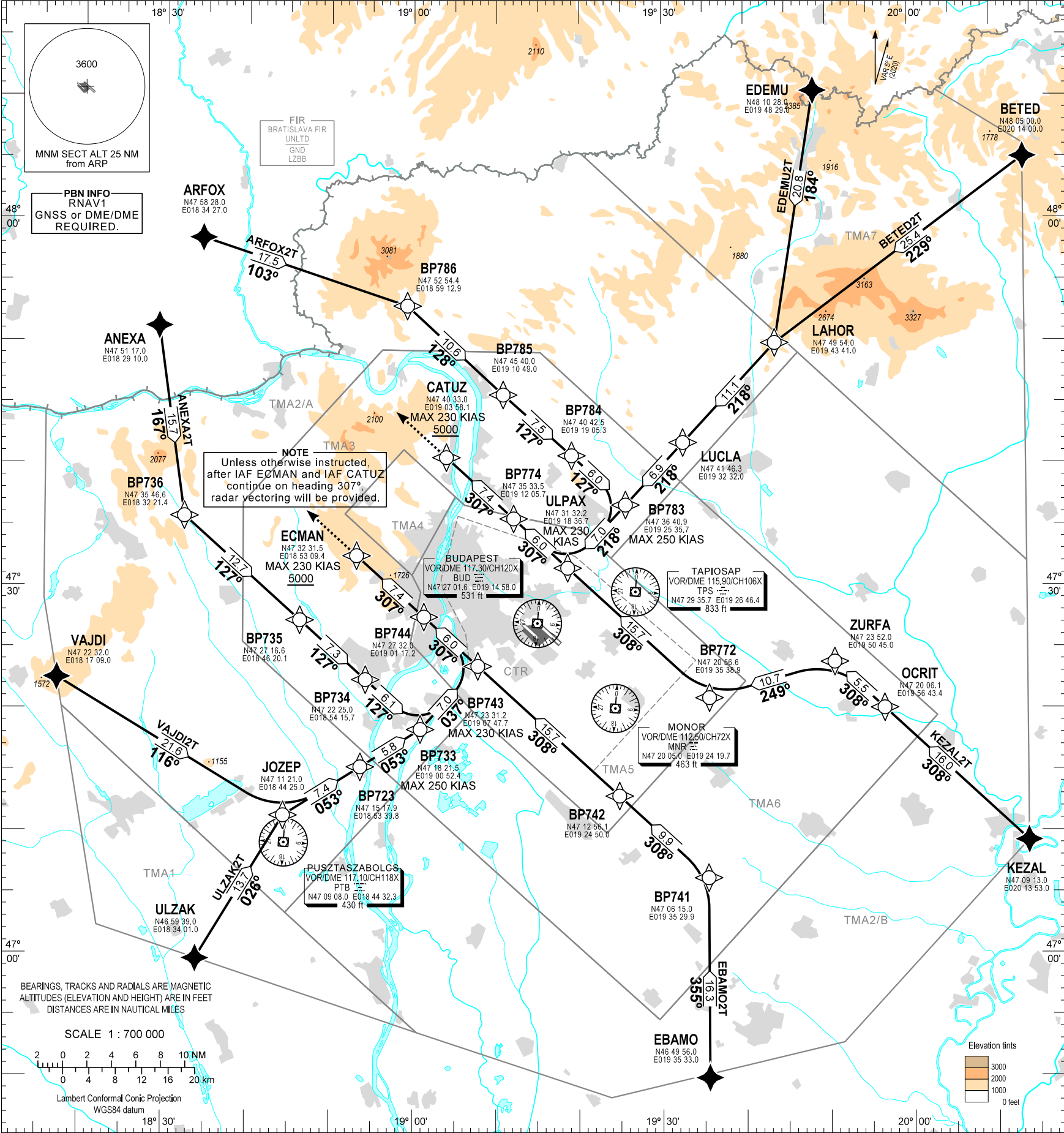


STANDARD ARRIVAL CHART -
INSTRUMENT (STAR) - ICAO

TRANSITION ALTITUDE
10000

BUDAPEST APP 122.980 123.860 BUDAPEST GROUND 121.905
BUDAPEST DELIVERY 134.540
BUDAPEST TOWER 118.715 ATIS 132.380 (117.300)
BUDAPEST INFORMATION (NORTH) 119.350, (NORTH-EAST) 134.855

BUDAPEST/LISZT FERENC
RNAV RWY 13L, 13R
ANEXA2T, ARFOX2T, ULZAK2T, BETED2T
EBAMO2T, EDEMU2T, KEZAL2T, VAJDI2T



NAME	PROCEDURE	RESTRICTIONS
ANEXA2T (ANEXA TWO TANGO ARRIVAL)	From ANEXA to BP736, to BP735, to BP734. To BP733, maximum speed 250 KIAS. To BP743, maximum speed 230 KIAS. To BP744, to ECMAN at or above 5000.	MAX 230 KIAS at ECMAN and CATUZ.
VAJDI2T (VAJDI TWO TANGO ARRIVAL)	From VAJDI to JOZEP, to BP723. To BP733, maximum speed 250 KIAS. To BP743, maximum speed 230 KIAS. To BP744, to ECMAN at or above 5000.	
ULZAK2T (ULZAK TWO TANGO ARRIVAL)	From ULZAK to JOZEP, to BP723. To BP733, maximum speed 250 KIAS. To BP743, maximum speed 230 KIAS. To BP744, to ECMAN at or above 5000.	
EBAMO2T (EBAMO TWO TANGO ARRIVAL)	From EBAMO to BP741, to BP742, to BP743, to BP744, to ECMAN at or above 5000.	
KEZAL2T (KEZAL TWO TANGO ARRIVAL)	From KEZAL to OCRIT, to ZURFA, to BP772, to ULPAX, to BP774, to CATUZ at or above 5000.	
BETED2T (BETED TWO TANGO ARRIVAL)	From BETED to LAHOR, to LUCLA, to BP783. To ULPAX, maximum speed 230 KIAS. To BP774, to CATUZ at or above 5000.	
EDEMU2T (EDEMU TWO TANGO ARRIVAL)	From EDEMU to LAHOR, to LUCLA, to BP783. To ULPAX, maximum speed 230 KIAS. To BP774, to CATUZ at or above 5000.	
ARFOX2T (ARFOX TWO TANGO ARRIVAL)	From ARFOX to BP786, to BP785, to BP784. To BP783, maximum speed 250 KIAS. To ULPAX, maximum speed 230 KIAS. To BP774, to CATUZ at or above 5000.	

BUDAPEST TMA						BUDAPEST CTR	
TMA1	<div>TMA BUDAPEST TMA1 FL195 9500</div>	TMA3	<div>TMA BUDAPEST TMA3 FL195 3500</div>	TMA6	<div>TMA BUDAPEST TMA6 FL195 2500</div>	CTR	<div>CTA BUDAPEST CTR 3500 GND</div>
TMA2/A	<div>TMA BUDAPEST TMA2/A FL195 5500</div>	TMA4	<div>TMA BUDAPEST TMA4 FL195 2500</div>	TMA7	<div>TMA BUDAPEST TMA7 FL195 9500</div>		
TMA2/B	<div>TMA BUDAPEST TMA2/B FL195 5500</div>	TMA5	<div>TMA BUDAPEST TMA5 FL195 2000</div>				

CHANGE: radio communication frequencies

THIS PAGE IS INTENTIONALLY LEFT BLANK